

# THE SHERWOOD THE SHIRES



2 | 

1 | 

1 | 



## KEY FEATURES

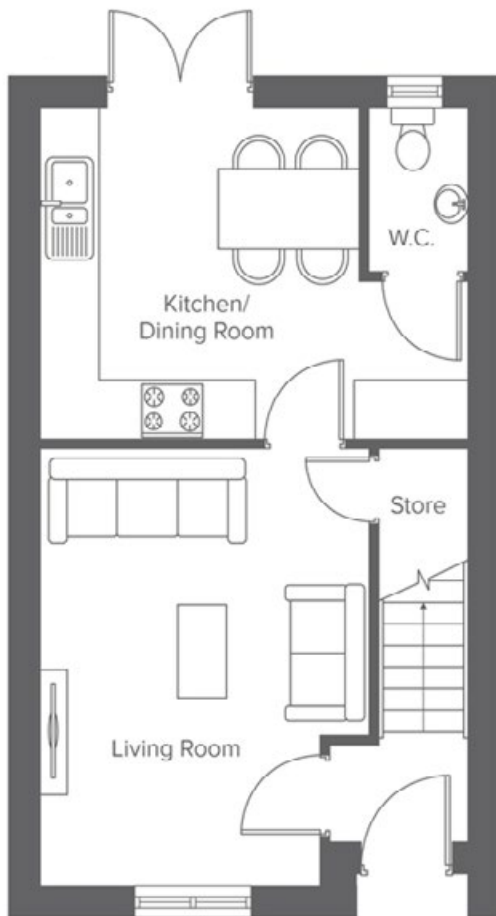
- 1 double bedroom & 1 twin bedroom
- Open plan kitchen/diner
- Separate lounge
- Patio doors to garden
- Integrated kitchen appliances
- Electric car charging point



**The Sherwood**  
Shared Ownership plots  
2, 5, 15-17, 19, 27,  
58, 64, 74

**THE SHIRES, OAK ROAD, PARTINGTON, M31 4LD**  
A range of stylish 2 & 3-bedroom houses

# THE SHERWOOD THE SHIRES





Ground Floor	Metric	Imperial
Kitchen/Dining	3.6 x 3.2	11'9" x 10'5"
Living Room	4.5 x 3.4	14'9" x 11'1"
W.C.	1.7 x 1.1	5'6" x 3'7"





First Floor	Metric	Imperial
Bedroom 1	3.3 x 4.4	10'9" x 14'5"
Bedroom 2	4.8 x 2.2	15'8" x 7'2"
Bathroom	2.4 x 2.1	7'10" x 6'10"


CONTACT OUR TEAM

 0161 532 9873

 [yourhousinggroup.co.uk](http://yourhousinggroup.co.uk)

 @yourhousinggroup

 @Your\_Housing

 @yourhousing