

THE KNEBWORTH MANOR GARDENS



3 | 

2 | 

1 | 



Artist's impression

KEY FEATURES

- 2 double bedrooms & 1 single bedroom
- Detached garage
- Spacious kitchen/diner
- Utility room
- En-suite from master bedroom
- Bay windows in lounge and master bedroom



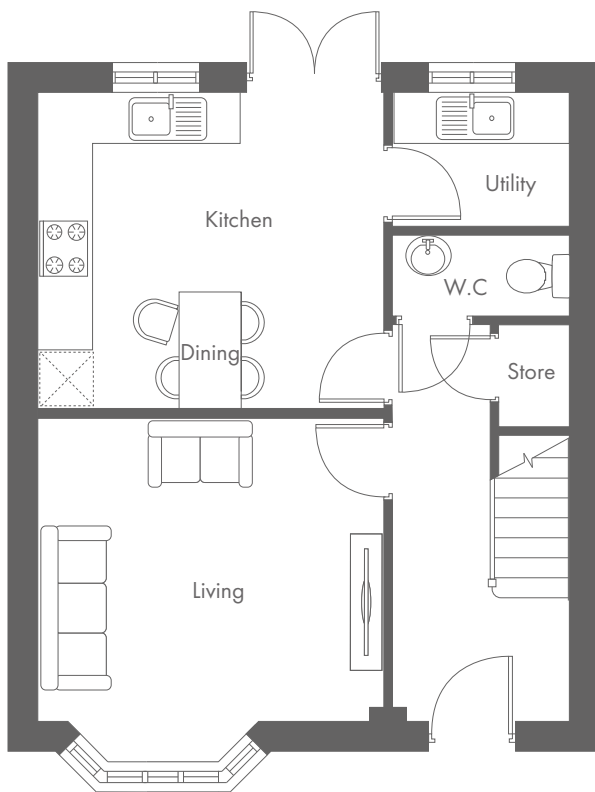
The Knebworth Shared Ownership plots

3-4, 17-18, 53-54,
56-57, 77-78
and 101-104

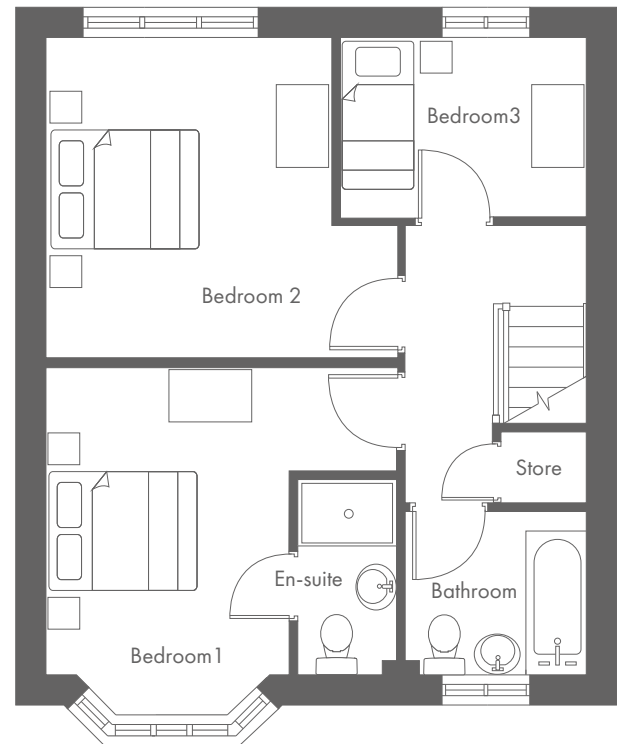
MANOR GARDENS, CHESTER ROAD, HARTFORD CW8 1LJ

A range of contemporary 2, 3 & 4-bedroom houses and 2-bedroom bungalows

THE KNEBWORTH MANOR GARDENS



Ground Floor	Metric	Imperial
Kitchen	4.0 x 3.8	13'1" x 12'6"
Utility	2.1 x 1.6	6'11" x 5'3"
Living	4.0 x 3.6	13'1" x 11'10"
W.C	2.1 x 1.0	6'11" x 3'4"



First Floor	Metric	Imperial
Bedroom 1	4.1 x 3.6	13'5" x 11'10"
Bedroom 2	4.1 x 3.8	13'5" x 12'6"
Bedroom 3	2.9 x 2.2	9'6" x 7'3"
En-suite	1.2 x 2.3	3'11" x 7'7"
Bathroom	2.2 x 1.9	7'3" x 6'3"

CONTACT OUR TEAM

📞 01606 822 936

🌐 yourhousinggroup.co.uk

📱 @yourhousinggroup

🐦 @Your_Housing

📘 @yourhousing