

THE CROFT MANOR GARDENS



3 | 

2 | 

1 | 



Artist's impression

KEY FEATURES

- 1 double bedroom & 2 single bedrooms
- En-suite from master bedroom
- Separate lounge
- 2 parking spaces
- Utility room
- Downstairs W.C

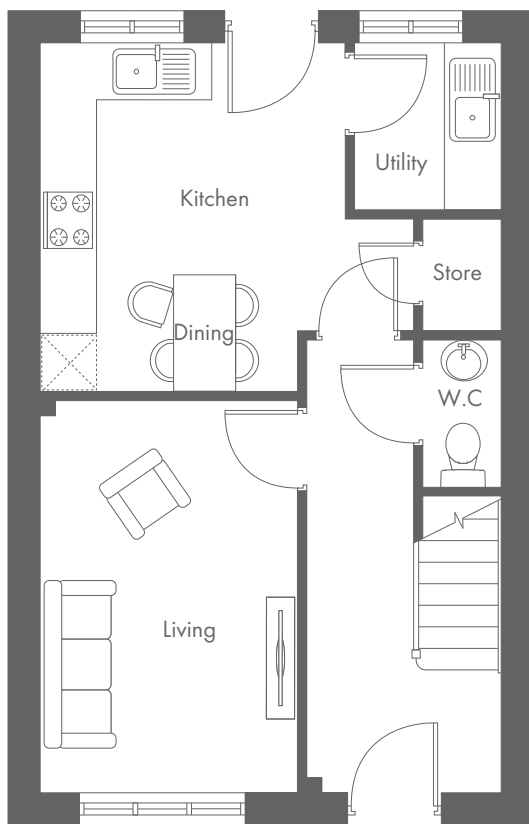


The Croft
Shared Ownership plots
9-14, 32-34, 63-68,
46-48, 50-52 and 84-89

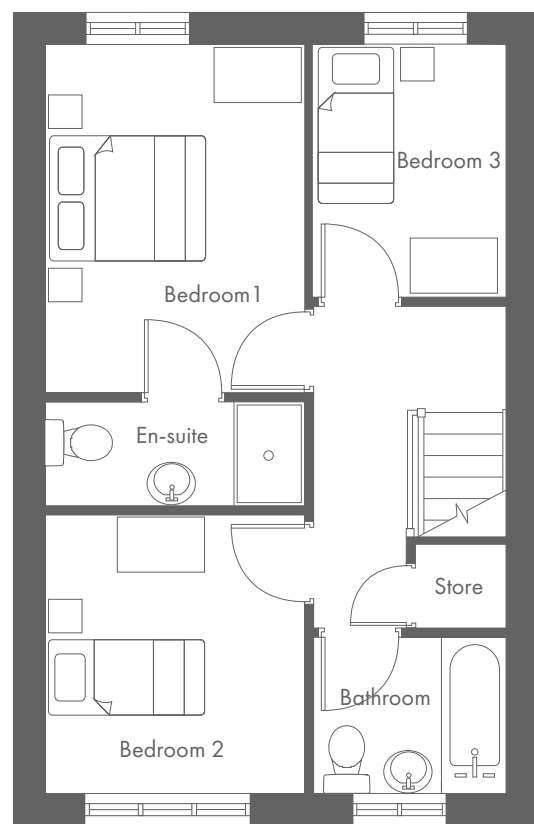
MANOR GARDENS, CHESTER ROAD, HARTFORD CW8 1LJ

A range of contemporary 2, 3 & 4-bedroom houses and 2-bedroom bungalows

THE CROFT MANOR GARDENS




Ground Floor	Metric	Imperial
Kitchen	3.9 x 3.4	12'10" x 11'2"
Utility	1.9 x 1.6	6'3" x 5'3"
W.C	0.9 x 1.7	2'11" x 5'7"
Living	4.3 x 2.9	14'1" x 9'6"





First Floor	Metric	Imperial
Bed 1	3.9 x 2.9	12'10" x 9'6"
Bed 2	3.0 x 2.9	9'10" x 9'6"
Bed 3	2.8 x 2.1	9'2" x 6'11"
En-suite	2.9 x 1.2	9'6" x 3'11"
Bathroom	2.1 x 1.8	6'11" x 5'11"


CONTACT OUR TEAM

 01606 822 936

 yourhousinggroup.co.uk

 @yourhousinggroup

 @Your_Housing

 @yourhousing